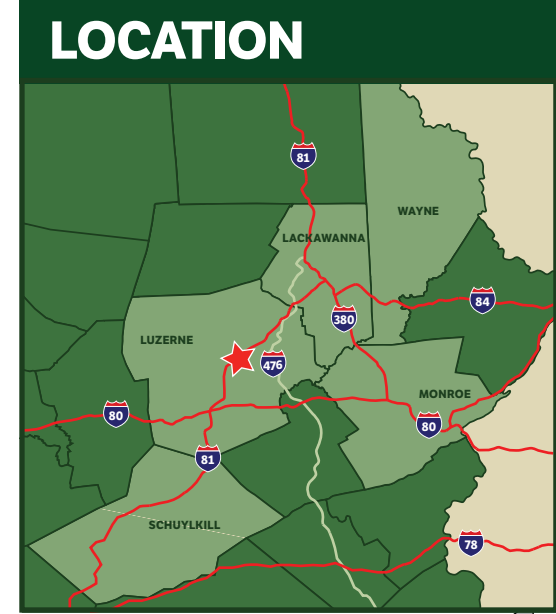
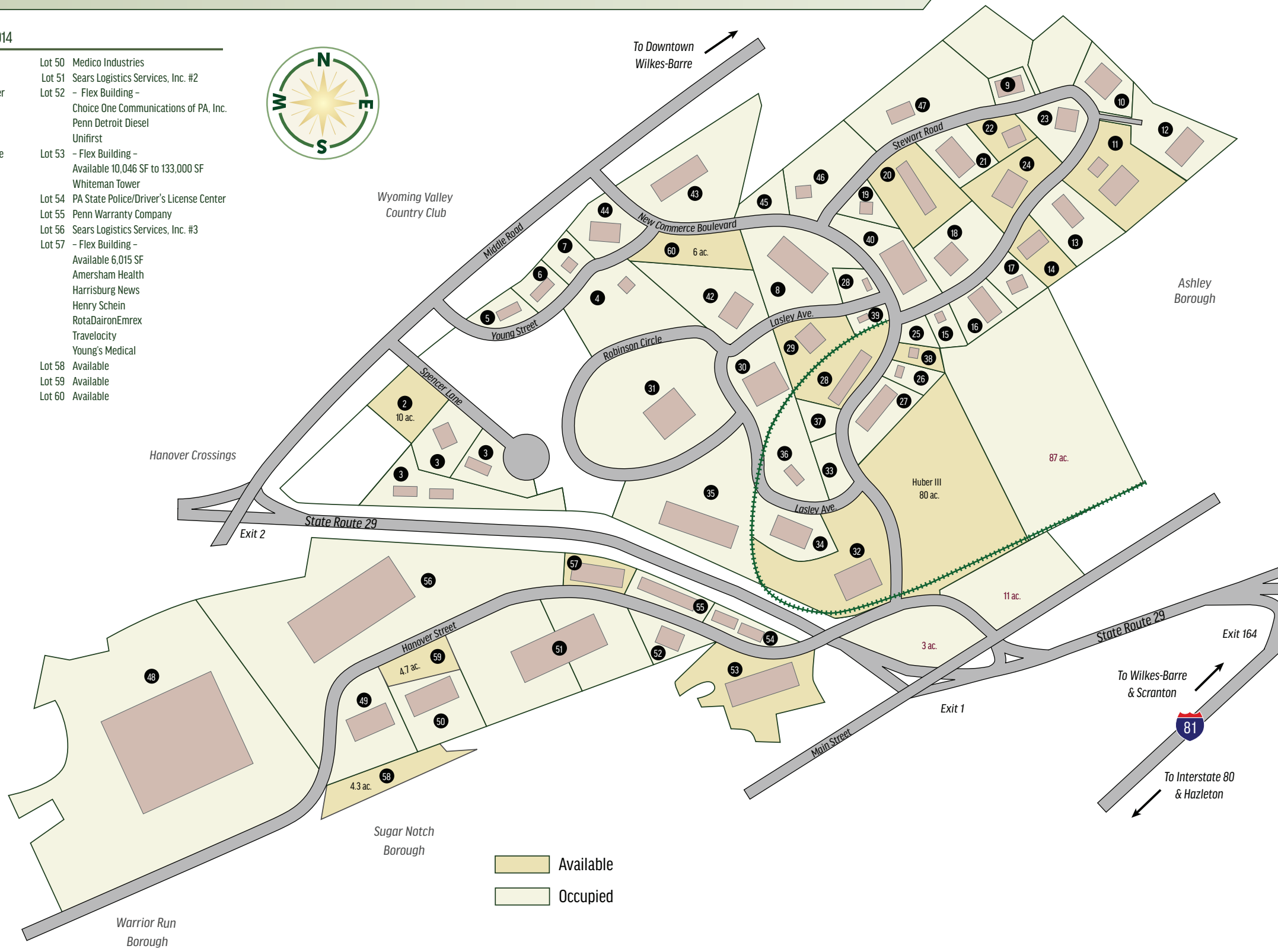


HANOVER INDUSTRIAL ESTATES

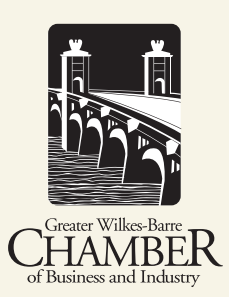
HANOVER TOWNSHIP • LUZERNE COUNTY • PENNSYLVANIA

PARK TENANTS as of 2014

- | | |
|--|--|
| Lot 2 Available | Lot 50 Medico Industries |
| Lot 3 Hanover Townhomes | Lot 51 Sears Logistics Services, Inc. #2 |
| Lot 4 Luzerne County 911 Communications Center | Lot 52 - Flex Building - Choice One Communications of PA, Inc. Penn Detroit Diesel Unifirst |
| Lot 5 NEPIRC | Lot 53 - Flex Building - Available 10,046 SF to 133,000 SF Whiteman Tower |
| Lot 6 U.S. Postal Service | Lot 54 PA State Police/Driver's License Center |
| Lot 7 Magic Years Childcare & Learning Center | Lot 55 Penn Warranty Company |
| Lot 8 Harte-Hanks Direct Marketing/Wilkes-Barre | Lot 56 Sears Logistics Services, Inc. #3 |
| Lot 9 Altria Group, Inc. (Distribution Center) | Lot 57 - Flex Building - Available 6,015 SF Amersham Health Harrisburg News Henry Schein RotaDaironEmrex Travelocity Young's Medical |
| Lot 10 Integrated Power Design, Inc. | Lot 58 Available |
| Lot 11 Available | Lot 59 Available |
| Lot 12 Webgistix | Lot 60 Available |
| Lot 13 Koehler-Bright Star, Inc. | |
| Lot 14 Available 53,000 SF | |
| Lot 15 Safety Kleen, Inc. | |
| Lot 16 Carpenter Engineered Products | |
| Lot 17 MPW | |
| Lot 18 Chaucer Press, Inc. | |
| Lot 19 Bekins - A-1 Moving, Inc. | |
| Lot 20 - Flex Building - Available 19,963 SF Aramark Uniform & Career Apparel, Inc. Itoh Denki USA, Inc. PharMerica Drug Systems, Inc. | |
| Lot 21 Empire Today | |
| Lot 22 - Flex Building - Available 9,315 SF Apria Healthcare UniFirst Corporation | |
| Lot 23 Karol Media | |
| Lot 24 Available 60,000 SF | |
| Lot 25 Luzerne County Rail Authority | |
| Lot 26 Cavanaugh Electric | |
| Lot 27 Nardone Brothers Baking Company | |
| Lot 28 - Flex Building - Available 20,000 SF PA LCB Genpact | |
| Lot 29 Lasco Fittings, Inc. Available 16,000 SF | |
| Lot 30 CCL Tube | |
| Lot 31 SallieMae | |
| Lot 32 Available 50,000 SF Keyco Distributors, Inc. | |
| Lot 33 Hanover Township | |
| Lot 34 Huttig Building Products | |
| Lot 35 Alexandria Mouldings, Inc. | |
| Lot 36 AT&T | |
| Lot 37 Bedwick & Jones Printers | |
| Lot 38 Available 7,200 SF | |
| Lot 39 Times Leader | |
| Lot 40 Bridon American Corporation | |
| Lot 41 Modern Handling Company | |
| Lot 42 Telerx | |
| Lot 43 Altria Group, Inc. | |
| Lot 44 American Red Cross | |
| Lot 45 Hershey Creamery Company | |
| Lot 46 North End Electric | |
| Lot 47 U.S. Army Reserve Center | |
| Lot 48 Sears Logistics Services, Inc. | |
| Lot 49 Sid Harvey's | |



CONTACTS



**GREATER WILKES-BARRE
CHAMBER OF BUSINESS
AND INDUSTRY**

Two Public Square
Wilkes-Barre, PA 18710-5304
Phone: 570-823-2101
Fax: 570-822-5951
www.wilkes-barre.org